

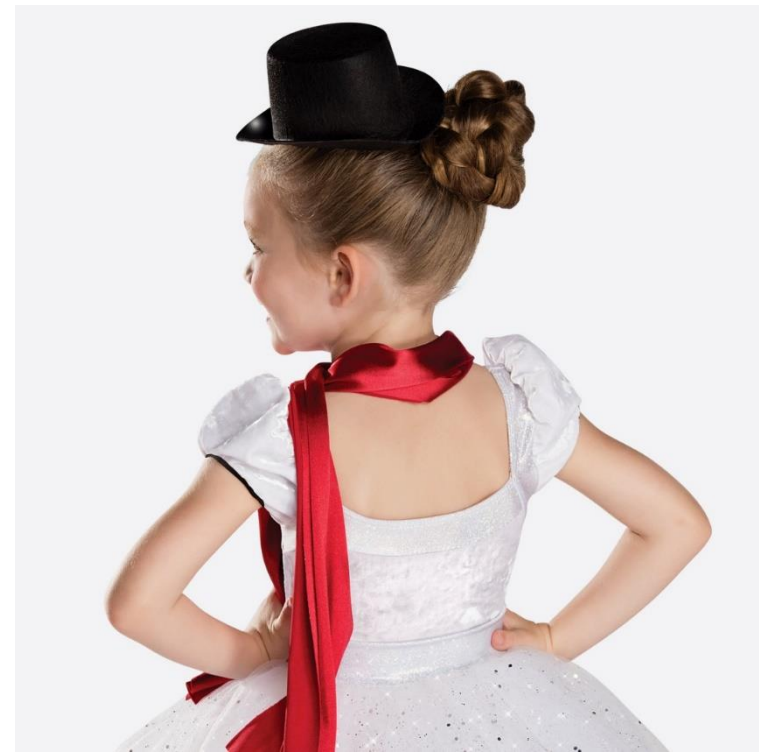
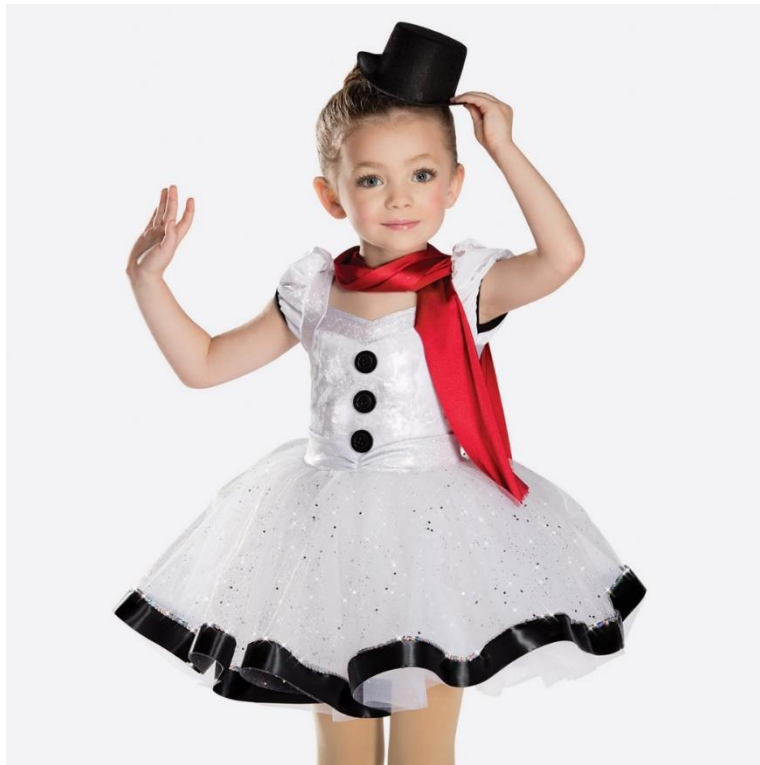
**GROUP 7 – Coach Paddy
Frosty and Rudolph**

COSTUME, TIGHTS, HAIR, AND MAKE-UP

| | |
|------------------|---|
| COSTUMES: | Your skater's costume will be available to pick up in the Club office during their first rehearsal. As stated on the Registration Form, with limited time before the show, there will be no time for costume returns or exchanges. Alterations needed will be at your own expense. To ensure that the costume stays in good condition, please do not allow your skater to wear their costume before the show. A picture of your skater's costume is below to show how the fitting and placement of accessories (belts, bows, etc.) is to look. |
| | |
| TIGHTS: | Tights are not included with the costume but are required to be worn by every female skater. Tights can be purchased at Skater's Edge or online through various companies. Please choose the color that best compliments your skater's skin tone in either style below. Mondor skating: #3310 - footed or Mondor skating: #3312 – footless/ankle. <u>NO over the boot tights or rhinestone tights for group numbers.</u> |
| | |
| HAIR: | Bun positioned middle, back of head. If hair is too short for bun, please pull hair back and away from skater's face as much as possible. Please make sure all hair and hair accessories are pinned securely. |
| | |
| MAKEUP: | Blush, mascara, and pink/red tone lipstick. |

FROSTY

- Hat is to be positioned to the skater's left side.
- An elastic strap will need to be sewn to the hat. If using white elastic for the strap, please use makeup to dye the strap to match your skater's complexion.
- Hat will need to be secured to hair with Bobby Pins.
- The scarf will **not** be used.



RUDOLPH

- An elastic strap will need to be sewn to the antlers. If using white elastic for the strap, please use makeup to dye the strap to match your skater's complexion.
- Antlers will need to be secured to hair with Bobby Pins.
- Gloves and boot cover not included.



**Group 7 – Coach Paddy
Frosty and Rudolph**

Practice Schedule

| | | |
|--|---------------------------------|--|
| Practice #1 | Saturday, November 11, 2023 | 2:30pm – 3:25pm |
| Practice #2 | Sunday, November 12, 2023 | 4:30pm – 5:25pm |
| Practice #3 | Saturday, November 18, 2023 | 2:30pm – 3:25pm |
| Practice #4 | Sunday, November 26, 2023 | 4:30pm – 5:25pm |
| *Practice #5 | Sunday, December 3, 2023 | 6:00pm – 6:55pm |
| Mandatory Finale & Dress Show Rehearsal | Friday, December 8, 2023 | 3:30pm – 8:00pm |
| Ice Show Performances | Saturday, December 9, 2023 | Arrival - 2:00pm Show #1 – 3:00pm Show #2 – 7:00pm |

*** Time Change**